

GENERAL INFORMATION

Rex ZT takeup blocks are designed for applications requiring a change in center distance between two shafts. The housings are mounted between two parallel guide rails. They are normally adjusted by use of a threaded rod that is held in the eye of the block with a pinned square or hex nut. All ZT blocks offer the same Rex features as other mounted units, including seal interchangeability and high quality, self-aligning, double row, roller bearings. These blocks can also be applied when the engineer wishes to design his own frame. ZT blocks fit into frames which are simple in both design, fabrication, and use. The blocks may also be purchased in ZHT, ZFT, ZAT, ZST, or ZGT frames.

Points to consider in using takeup blocks:

1. Take-up blocks can be installed in any position.
2. Expansion units are not usually required due to clearances between guide bars and slots.

ZT - Center Pull Take-up Blocks - Normal Duty

- ¾" through 7" shaft sizes
- Shaft mounting styles
 - ✓ 2000 series, see page D-34
 - ✓ 3000 series available, see page D-41
 - ✓ 5000 series, see page D-34
 - ✓ 9000 series available, see page D-41



**Normal Duty
2000 Series**



**Heavy Duty
5000 Series**

Additional Information

Housing Material - Cast iron unless otherwise noted. Other materials available on special order.

Grease fittings - ⅛ NPT tapped holes with grease fittings thru size code 11, ¼ NPT above.

Slot Width - Milled with sufficient clearance to operate on hot rolled guide bars.

Guide Bar Spacing - Should be ½" to ¼" greater than "K" dimension shown on Specification Pages.

Threaded Rod Hole - Cored larger than "J" dimension shown on Specification Pages.

Auxiliary Caps - All blocks can be furnished with caps.

ZT TAKE-UP BLOCKS

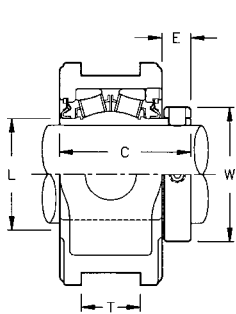
Rex' Roller Bearings



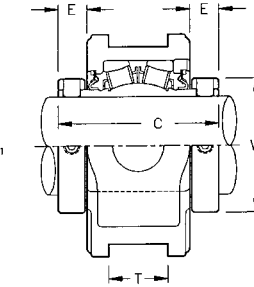
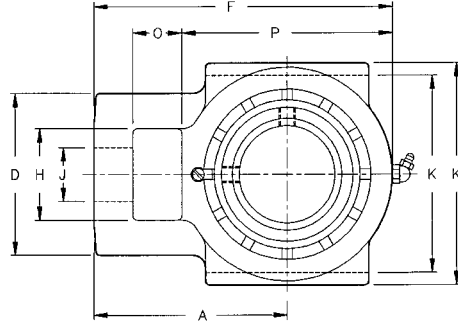
NORMAL DUTY 2000 Series Single Set Collar

HEAVY DUTY 5000 Series Double Set Collar

Take-up Blocks Listed on this Page may be used with any ZHT, ZST, ZFT, ZAT or ZGT Frame Assembly shown on Pages D-36, D-37 and D-39 that use the Same Size Code.



NORMAL DUTY — 2000 Series



HEAVY DUTY — 5000 Series

Specifications . . . Radial load ratings are shown on page D-56

Shaft Size Inches	Complete Block No.		Allowable Working Load* lbs.	Size Code	Dimension in Inches															Complete Block Weight, Lbs.	
	2000 Series	5000 Series			A	C		D	E	F	H	J	K +.005 -.015	K ₁	L	O	P	T +.005 -.015	W	With 2000 Series Bearing	With 5000 Series Bearing
						2000 Series	5000 Series														
3/4	ZT2-2012	...	4,400	2	2 9/16	2 9/16	...	2	9/16	4 1/16	1 1/4	3/4	3	3 5/8	1 5/16	5/8	3	1 7/32	1 3/4	4.0	...
1 1/16	ZT2-2015	...																		4.0	...
1	ZT2-2100	...																		3.9	...
1 1/8	ZT3-2102	...	5,700	3	2 7/8	2 11/16	...	2 5/16	9/16	4 9/16	1 7/16	7/8	3 1/2	4 1/8	1 11/32	5/8	3 3/8	1 7/32	2	5.5	...
1 9/16	ZT3-2103	...																		5.4	...
1 1/4	ZT3-2104	...																		5.3	...
1 7/16	ZT4-2107	ZT4-5107	7,600	4	3 1/4	2 7/8	3 3/16	2 7/16	1 1/16	5 1/16	1 7/16	7/8	3 1/2	4 1/8	1 3/4	5/8	3 3/4	1 7/32	2 5/16	6.4	6.8
1 1/2	ZT4-2108	...																		6.3	...
1 1/2	...	ZT5-5108	12,300	5	3 3/16	3 3/8	3 3/16	3 3/16	1 1/16	5 1/16	1 15/16	1 1/8	4	4 3/4	2 1/32	3/4	4 1/4	1 1/16	2 5/8	...	10.9
1 3/4	ZT5-2112	...																		9.8	10.2
1 11/16	ZT5-2111	ZT5-5111																		9.7	...
1 15/16	ZT6-2115	ZT6-5115	12,300	6	3 15/16	3 1/8	3 3/16	3 5/16	1 1/16	6 3/16	1 15/16	1 1/8	4	4 1/2	2 5/16	3/4	4 1/2	1 1/16	2 15/16	10.1	10.8
2	ZT6-2200	...																		9.9	...
2	...	ZT7-5200	13,500	7	4 5/8	3 5/16	4 1/8	3 7/8	1 9/16	7 1/8	2 1/4	1 1/8	4 1/2	5 1/4	2 5/8	1 1/4	5	1 9/16	3 3/4	...	15.2
2 9/16	ZT7-2203	ZT7-5203																		13.6	14.5
2 1/4																		13.4	...
2 3/8	ZT8-2206	...	20,900	8	5 1/16	3 1/2	4 3/8	4 1/4	7/8	7 13/16	2 1/4	1 1/8	5 5/8	5 7/8	2 29/32	1 1/4	5 1/2	1 1/16	3 3/16	18.3	...
2 7/16	ZT8-2207	ZT8-5207																		18.2	19.4
2 1/2	ZT8-2208	...																		17.9	...
2 1/2	...	ZT9-5208	26,800	9	5 15/16	4	4 7/8	4 7/8	7/8	9 1/8	2 3/4	1 5/8	5 15/16	6 11/16	3 3/8	1 1/2	6 7/16	1 13/16	4 1/16	...	31.5
2 11/16	ZT9-2211	ZT9-5211																		28.8	30.1
2 3/4	ZT9-2212	...																		28.4	...
2 15/16	ZT9-2215	ZT9-5215																		27.6	28.8
3	ZT9-2300	...																		27.0	...
3 3/16	ZT10-2303	ZT10-5303	27,300	10	6 5/16	4 3/8	5 5/16	5 3/8	1 5/16	10	2 7/8	1 7/8	6 13/16	7 13/16	3 31/32	1 5/8	7 3/8	1 13/16	4 15/16	42.5	44.0
3 7/16	ZT10-2307	ZT10-5307																		40.5	42.0
3 1/2	ZT10-2308	...																		40.0	...
3 11/16	ZT11-2311	ZT11-5311																		71.0	75.0
3 15/16	ZT11-2315	ZT11-5315	45,400	11	7 11/16	5 3/16	6 1/4	5 3/8	1 11/16	12 1/8	3 3/8	2 1/8	8 5/8	9 7/16	4 9/16	2 1/8	8 7/8	2 1/16	5 5/8	68.0	72.0
4	ZT11-2400	ZT11-5400																		67.0	71.0
4 3/16	...	ZT12-5403Y	53,700	12	8 11/16	...	6 1/4	6 3/8	1	13 7/16	3 3/8	2 1/8	9 1/2	10 3/8	5 1/32	2 1/8	9 13/16	2 1/16	6 3/16	...	94.0
4 7/16	...	ZT12-5407Y																		91.0	...
4 1/2	...	ZT12-5408Y																		90.0	...
4 15/16	...	ZT13-5415	68,000	13	9 7/16	...	7 7/8	6 1/4	1 1/32	14 7/8	3 3/4	2 3/8	10 1/4	11 1/4	5 3/4	2 1/2	10 7/8	2 1/16	7 1/16	...	130
5	...	ZT13-5500																		127	...
5 7/16	...	ZT14-5507	140,900	14	12 7/16	...	8	8	1 1/32	20 5/8	5	3 3/8	14 1/8	16	6 1/2	3 1/2	15 5/8	2 9/16	8 3/16	...	417
5 15/16	...	ZT15-5515	140,900	15	12 15/16	...	8 1/8	8	1 1/32	20 5/8	5	3 3/8	14 1/8	16	7 7/32	3 1/2	15 3/8	2 9/16	8 11/16	...	426
6	...	ZT15-5600																		424	...
6 7/16	...	ZT16-5607	165,300	16	12 15/16	...	8 3/4	8	1 1/32	20 5/8	5	3 3/8	14 1/8	16	8 1/16	3 1/2	15 3/8	2 9/16	9 3/4	...	433
6 15/16	...	ZT16-5615																		428	...
7	...	ZT16-5700																		426	...

Bore Size = Nominal Shaft Size +.001 -.000

Metric Bore Sizes Available - See Page D-44

Seals - To specify K or M seal, replace "Z" in model number with "K" or "M" - See Pages D-58 and D-59.

Auxiliary Caps - Not available in Size Code 2 & 3

*Allowable Working load is 2/3 yield strength

Note: Dimensions subject to change. Certified dimensions of ordered material furnished on request. OTHER SHAFT MOUNTING STYLES AVAILABLE. REFER TO PAGE D-33.

**ZHT Center Pull Type
Heavy Duty - 5000 Series**

For shaft sizes 1⁵/₁₆" through 7", 12" through 42" travel. Dimensions, page D-36.

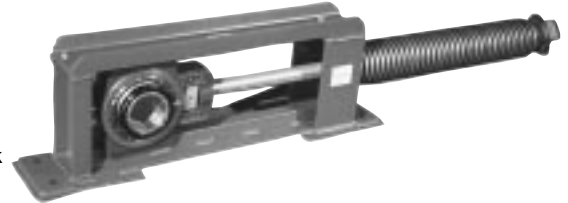
Channel frame center pull construction floats the housing between the guide bars to eliminate binding. Capstan nut on the screw assures ease of movement in either direction under load. Can also be used with ZT-2000 or ZT-3000 Series Take-Up Blocks.



**ZST Spring Loaded Take Up
Heavy Duty - 5000 Series**

For shaft sizes 1⁵/₁₆" to 5", with 18" of travel. Dimensions, page D-37.

Utilizes the ZHT frame with dual rate springs which are designed to absorb shock and to preload the system. This reduces maintenance and extends system life (chain, belt, sprockets, drives, motor, etc. . . .).



**ZNT Protected Screw Type
Normal Duty - 2000 Series or 3000 Series Twist Lock**

For shaft sizes 1⁵/₁₆" through 4", 12" through 36" travel. Dimensions, page D-38.

Top angle member can be easily removed from channel base. Can be used with 3000 or 5000 Series bearings in ZN blocks.



**ZAT - Center Pull - Side Mounted
Normal Duty - 2000 Series or 3000 Series Twist Lock**

For shaft sizes 1⁷/₁₆" through 2¹⁵/₁₆".

Dimensions, page D-39.

Designed for light duty service in take-up applications. The frame has been designed to be readily adaptable for horizontal or vertical movement, and for easy mounting on fabricated structures. Designed for 2000 or 3000 Series only. Auxiliary caps fit outboard side only.



ZFT Elevator Boot - Heavy Duty - 5000 Series

For shaft sizes 1⁵/₁₆" through 2¹⁵/₁₆".

For 9" through 12" travel.

Dimensions, page D-39.

Felt-faced sliding back plate makes elevator casing dust tight. Can also be used with ZT-2000 or ZT-3000 Series Take-Up Blocks.



**ZGT Elevator Head
Heavy Duty - 5000 Series**

For shaft sizes 1⁵/₁₆" through 7". For 6" through 10" travel. Dimensions, page D-39.

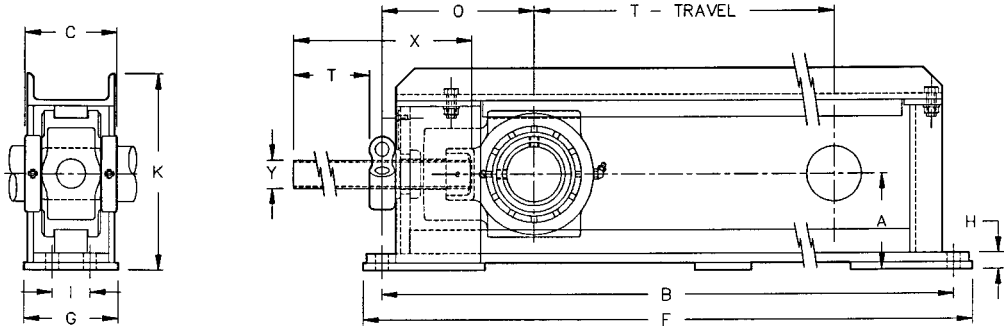
Assembled by removing top frame member and sliding block in place. Designed for downward loads only. Can also be used with ZT-2000 or ZT-3000 Series Take-Up Blocks.



OTHER SHAFT MOUNTING STYLES AVAILABLE. REFER TO PAGE D-33.



CENTER PULL TYPE HEAVY DUTY 5000 Series — Double Set Collar



Specifications . . . Radial load ratings of Bearings— see pages D-56

Shaft Size Inches	5000 Series		Frame Only	Allowable Working Load† Lbs.	Size Code	Dimensions in Inches										Bolts Req'd		Complete Take-up Net Wt. Lbs.				
	Complete Take-up Assembly	Take-up Block Only*				A	B	C	F	G	H	I	K	T Travel	O	X	Y Thread		No.	Size		
1½ 1⅞ 1⅝	ZHT5-5108 ZHT5-5111 ZHT6-5115	{ -12 -18 -24 -30 -36	ZT5-5108 ZT5-5111 ZT6-5115	{ -12 -18 -24 -30 -36	ZHT6	12,300	...	3⅞	27½ 33½ 39½ 45½ 51½	3⅞	29½ 35½ 41½ 47½ 53½	4	⅞	...	8⅞	15 21 27 33 39	6⅞	19½ 25½ 31½ 37½ 43½	1 8NC	2	⅝	59 69 77 86 95
2 2⅞	ZHT7-5200 ZHT7-5203	{ -12 -18 -24 -30 -36	ZT7-5200 ZT7-5203	{ -12 -18 -24 -30 -36	ZHT7	13,000	7	4⅞	27½ 33½ 39½ 45½ 51½	4⅞	29½ 35½ 41½ 47½ 53½	4	1⅞	...	9	15 21 27 33 39	6⅞	20 26 32 38 44	1¼ 7NC	2	⅝	70 81 90 98 108
2⅞	ZHT8-5207	{ -12 -18 -24 -30 -36	ZT8-5207	{ -12 -18 -24 -30 -36	ZHT8	16,300	8	4⅞	28½ 34½ 40½ 46½ 52½	4⅞	30½ 36½ 42½ 48½ 54½	4	¾	...	9⅞	15 21 27 33 39	7½	20 26 32 38 44	1¼ 7NC	2	¾	77 86 96 107 119
2½ 2⅞ 2⅝	ZHT9-5208 ZHT9-5211 ZHT9-5215	{ -12 -18 -24 -30 -36	ZT9-5208 ZT9-5211 ZT9-5215	{ -12 -18 -24 -30 -36	ZHT9	26,800	9	5⅞	30½ 36½ 42½ 48½ 54½	4⅞	32½ 38½ 44½ 50½ 56½	5	⅞	2	10¼	16 22 28 34 40	8⅞	21¼ 27¼ 33¼ 39¼ 45¼	1½ 6NC	4	⅝	128 142 159 174 191
3⅞ 3⅝	ZHT10-5303 ZHT10-5307	{ -12 -18 -24 -30 -36	ZT10-5303 ZT10-5307	{ -12 -18 -24 -30 -36	ZHT10	27,300	10	5⅞	32 38 44 50 56	5⅞	34¼ 40¼ 46¼ 52¼ 58¼	5	⅞	2	11⅞	16¼ 22¼ 28¼ 34¼ 40¼	8¾	22 28 34 40 46	1¾ 5NC	4	¾	152 177 186 205 224
3⅞ 3⅝ 4	ZHT11-5311 ZHT11-5315 ZHT11-5400	{ -12 -18 -24 -30 -36	ZT11-5311 ZT11-5315 ZT11-5400	{ -12 -18 -24 -30 -36	ZHT11	38,400	11	7	36 42 48 54 60	6¼	38½ 44½ 50½ 56½ 62½	6	⅞	2½	14⅞	17½ 23½ 29½ 35½ 41½	10⅞	26 32 38 44 50	2 4½NC	4	¾	241 270 290 311 337
4⅞ 4⅝	ZHT12-5403Y ZHT12-5407Y	{ -12 -18 -24 -30 -36 -42	ZT12-5403Y ZT12-5407Y	{ -12 -18 -24 -30 -36 -42	ZHT12	53,300	12	7½	40¼ 46¼ 52¼ 58¼ 64¼ 70¼	6¼	45¼ 51¼ 57¼ 63¼ 69¼ 75¼	8⅞	1	5	15½	19 25 31 37 43 49	12¼	26 32 38 44 50 56	2 4½NC	4	1⅞	331 362 391 410 433 461
4⅞ 5	ZHT13-5415 ZHT13-5500	{ -12 -18 -24 -30 -36 -42	ZT13-5415 ZT13-5500	{ -12 -18 -24 -30 -36 -42	ZHT13	68,000	13	8⅞	44½ 50½ 56½ 62½ 68½ 74½	7⅞	49½ 55½ 61½ 67½ 73½ 79½	9⅞	1	5½	16¼	20¼ 26¼ 32¼ 38¼ 44¼ 50¼	13½	29 35 41 47 53 59	2¼ 4½NC	4	1⅞	440 460 496 527 555 587
5⅞	ZHT14-5507	{ -18 -30 -42	ZT14-5507	{ -18 -30 -42	ZHT14	136,700	14	10⅞	55 67 79	8	61 73 85	12	1½	7	22½	18 30 42	23½	36 48 60	3 4NC	4	1¾	1293 1420 1547
5⅞ 6	ZHT15-5515 ZHT15-5600	{ -18 -30 -42	ZT15-5515 ZT15-5600	{ -18 -30 -42	ZHT15	136,700	15	10⅞	55 67 79	8⅞	61 73 85	12	1½	7	22½	18 30 42	23½	36 48 60	3 4NC	4	1¾	1300 1427 1554
6⅞ 6⅝ 7	ZHT16-5607 ZHT16-5615 ZHT16-5700	{ -18 -30 -42	ZT16-5607 ZT16-5615 ZT16-5700	{ -18 -30 -42	ZHT16	136,700	16	10⅞	55 67 79	8¾	61 73 85	12	1½	7	22½	18 30 42	23½	36 48 60	3 4NC	4	1¾	1304 1431 1558

Bore Size = Nominal Shaft Size +.001 -.000

Metric Bore Sizes Available - See Page D-44

Seals - To specify K or M seal, replace "Z" in model number with "K" or "M" - See Pages D-58 and D-59.

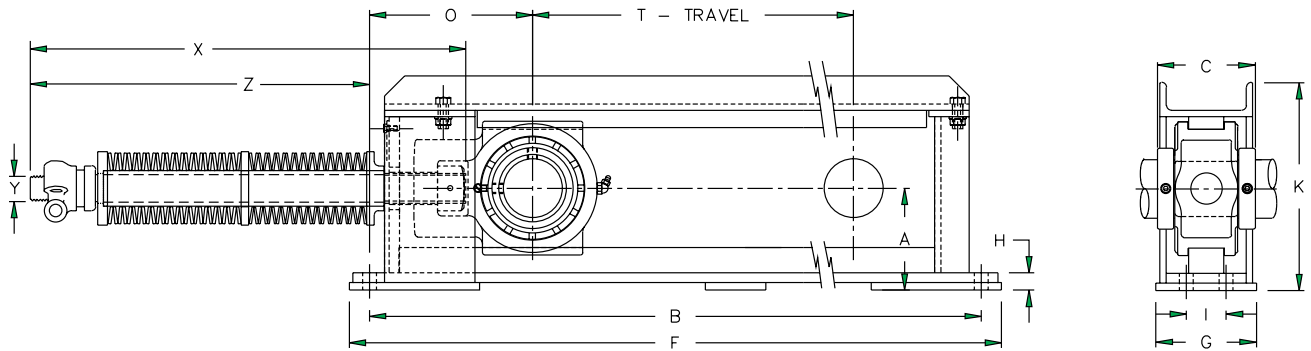
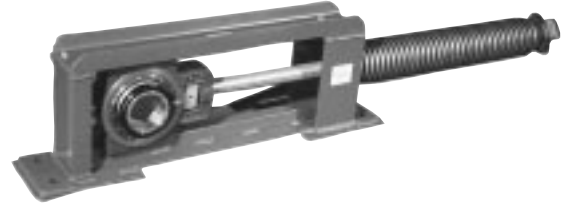
† Allowable Working load is 2/3 yield strength

Note: Dimensions subject to change. Certified dimensions of ordered material furnished on request.

OTHER SHAFT MOUNTING STYLES AVAILABLE. REFER TO PAGE D-33.

ZST TAKE-UP ASSEMBLIES

**CENTER PULL
HEAVY DUTY
SPRING LOADED
5000 Series
Double Set Collar**
Utilizes ZHT Frame
Absorbs Shock
Reduces Maintenance
Extends System Life
Compact - Reliable



Specifications . . . Radial load ratings of Bearings are shown on page D-56 — Frame capacity listed in table below

Shaft Size	Size Code	Complete Spring Frame Assembly	Frame & Spring Assembly	Working Loads Lbs for Each Take-up			Allow Frame Load	A	B	C	F	G	H	I	K	T Travel	O	X	Y Thread	Z Max	Bolts		
				Inches of Spring Deflection																	No.	Size	
				1	3	5																	
1½	5	ZST5-5108-18	ZST6-18	870	1800	3400	12,300	3½	33½	3½	35½	4	¾	...	87/16	21	6¾	43	1	39	2	¾	
1½		ZST5-5111-18																					8NC
1½		ZST6-5115-18																					8NC
2	7	ZST7-5200-18	ZST7-18	870	1800	3400	13,000	47/16	33½	4½	35½	4	1¾	...	9	21	6¾	43	1¼	39	2	¾	
2		ZST7-5203-18																					7NC
2		ZST8-5207-18																					7NC
2½	8	ZST8-5207-18	ZST8-18	870	1800	3400	16,300	4%	34½	4%	36½	4	¾	...	9¾	21	7½	43	1¼	39	2	¾	
2½		ZST9-5208-18																					6NC
2½		ZST9-5211-18																					6NC
2½	9	ZST9-5215-18	ZST9-18	1300	3400	5250	26,800	5½	36½	4%	38½	5	¾	2	10¾	22	8½	45	1½	40¼	4	¾	
2½		ZST10-5303-18																					5NC
2½		ZST10-5307-18																					5NC
3½	10	ZST10-5303-18	ZST10-18	1800	3700	6800	27,300	5%	38	5½	40¼	5	¾	2	11¾	22¼	8¾	45	1¾	40¼	4	¾	
3½		ZST11-5311-18																					4½NC
3½		ZST11-5400-18																					4½NC
4	11	ZST11-5311-18	ZST11-18	2600	5200	9400	38,400	7	42	6¼	44½	6	¾	2½	14¾	23½	10%	48½	2	41	4	¾	
4		ZST11-5315-18																					4½NC
4		ZST12-5403Y-18																					4½NC
4¾	12	ZST12-5403Y-18	ZST12-18	2600	5200	9400	53,300	7½	46¾	6¼	51¾	8%	1	5	15½	25	12¼	48½	2	41	4	1½	
4¾		ZST12-5407Y-18																					4½NC
4¾		ZST13-5415-18																					4½NC
4¾	13	ZST13-5415-18	ZST13-18	4475	11200	18000	68,000	8%	50½	7%	55½	9%	1	5½	16¾	26¼	13½	52	2¼	45½	4	1½	
4¾		ZST13-5500-18																					4½NC
4¾		ZST13-5500-18																					4½NC

Bore Size = Nominal Shaft Size +.001 -.000

Metric Bore Sizes Available - See page D-44

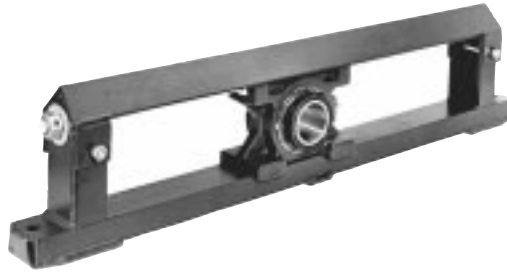
Seals - To specify K or M seal, replace "Z" in model number with "K" or "M" - See Pages D-58 and D-59.

* Allowable Frame load is 2/3 yield strength.

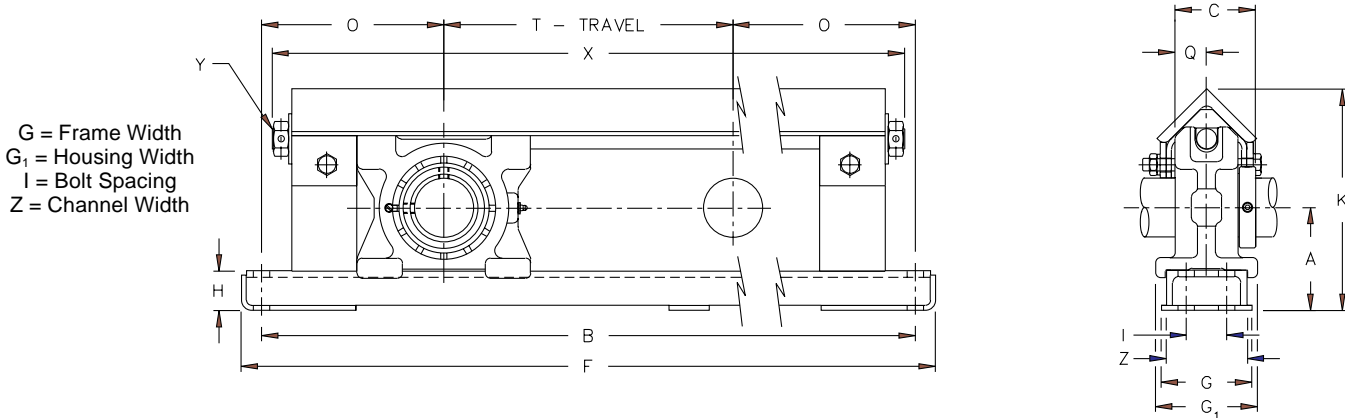
Note: Dimensions subject to change. Certified dimensions of ordered material furnished on request.

OTHER SHAFT MOUNTING STYLES AVAILABLE. REFER TO PAGE D-33.

PROTECTED SCREW TYPE NORMAL DUTY 2000 Series — Single Set Collar



U.S. Patent No. 4,867,580



Specifications . . . Radial load ratings of Bearings are shown on page D-56 — Frame capacity listed in table below

Shaft Size Inches	Complete Assembly No.	Take-up Blocks Only	Block Wt.	Frame Assemblies Only	Allowable Working Load* Lbs.	Size Code	Dimensions in Inches														Bolts Req'd		Complete Take-up Wt. Lbs.		
							A	B	C	F	G	G ₁	H	I	K	T Travel	O	Q	X	Y	Z	No.		Size	
1 ⁵ / ₁₆ 2	ZNT6-2115 ZNT6-2200	ZNG-2115 ZNG-2200	13.0 12.8	ZNT6	3,000	6	3 ⁵ / ₁₆	-12	26 ¹ / ₂	28 ¹ / ₂	3 ¹ / ₂	3 ³ / ₁₆	1 ³ / ₄	...	8 ¹ / ₄	12	7 ¹ / ₄	1 ⁷ / ₃₂	25 ³ / ₁₆	10 NC	3	2	5 ⁸ / ₁₆	45	
								-18	32 ¹ / ₂	34 ¹ / ₂						18			31 ³ / ₁₆					50	
								-24	38 ¹ / ₂	40 ¹ / ₂						24			37 ³ / ₁₆					56	
								-30	44 ¹ / ₂	46 ¹ / ₂						30			43 ³ / ₁₆					63	
								-36	50 ¹ / ₂	52 ¹ / ₂						36			49 ³ / ₁₆					70	
2 ³ / ₁₆ 2 ¹ / ₄	ZNT7-2203 ZNT7-2204	ZNG-2203 ZNG-2204	17.3 17.1	ZNT7	3,600	7	4 ⁹ / ₁₆	-12	27 ¹ / ₂	29 ¹ / ₂	3 ¹ / ₂	3 ³ / ₁₆	1 ³ / ₄	...	8 ¹ / ₁₆	12	7 ³ / ₄	1 ¹ / ₃₂	26 ³ / ₁₆	10 NC	3	2	5 ⁸ / ₁₆	49	
								-18	33 ¹ / ₂	35 ¹ / ₂						18			32 ³ / ₁₆					54	
								-24	39 ¹ / ₂	41 ¹ / ₂						24			38 ³ / ₁₆					66	
								-30	45 ¹ / ₂	47 ¹ / ₂						30			44 ³ / ₁₆					73	
								-36	51 ¹ / ₂	53 ¹ / ₂						36			50 ³ / ₁₆					78	
2 ³ / ₁₆ 2 ⁷ / ₁₆ 2 ¹ / ₂	ZNT8-2206 ZNT8-2207 ZNT8-2208	ZNG-2206 ZNG-2207 ZNG-2208	21.5 21.4 21.1	ZNT8	4,400	8	4 ³ / ₈	-12	28 ¹ / ₂	30 ¹ / ₂	3 ¹ / ₂	3 ³ / ₁₆	1 ³ / ₄	...	9 ¹ / ₈	12	8 ¹ / ₄	1 ¹ / ₁₆	27 ³ / ₁₆	9 NC	3	2	3 ⁴ / ₈	59	
								-18	34 ¹ / ₂	36 ¹ / ₂						18			33 ³ / ₁₆					63	
								-24	40 ¹ / ₂	42 ¹ / ₂						24			39 ³ / ₁₆					74	
								-30	46 ¹ / ₂	48 ¹ / ₂						30			45 ³ / ₁₆					79	
								-36	52 ¹ / ₂	54 ¹ / ₂						36			51 ³ / ₁₆					85	
2 ¹ / ₁₆ 2 ¹ / ₁₆ 3	ZNT9-2211 ZNT9-2215 ZNT9-2300	ZNG-2211 ZNG-2215 ZNG-2300	31.0 29.8 29.2	ZNT9	6,800	9	5 ¹ / ₈	-12	30 ¹ / ₂	32 ¹ / ₂	4	5 ¹ / ₁₆	2	2	10 ⁵ / ₁₆	12	9 ¹ / ₄	1 ¹ / ₁₆	30	8 NC	4	4	3 ⁴ / ₈	85	
								-18	36 ¹ / ₂	38 ¹ / ₂						18			36					93	
								-24	42 ¹ / ₂	44 ¹ / ₂						24			42					113	
								-30	48 ¹ / ₂	50 ¹ / ₂						30			48					120	
								-36	54 ¹ / ₂	56 ¹ / ₂						36			54					128	
3 ³ / ₁₆ 3 ¹ / ₁₆ 3 ¹ / ₂	ZNT10-2303 ZNT10-2307 ZNT10-2308	ZNG-2303 ZNG-2307 ZNG-2308	46.0 44.0 43.5	ZNT10	8,400	10	5 ¹ / ₈	-12	32	34 ¹ / ₄	4 ¹ / ₂	5 ³ / ₁₆	2	2	11 ¹ / ₄	12	10	1 ² / ₃₂	32	7 NC	4	4	3 ⁴ / ₈	118	
								-18	38	40 ¹ / ₄						18			38					127	
								-24	44	46 ¹ / ₄						24			44					145	
								-30	50	52 ¹ / ₄						30			50					154	
								-36	56	58 ¹ / ₄						36			56					166	
3 ¹ / ₁₆ 3 ¹ / ₁₆ 4	ZNT11-2311 ZNT11-2315 ZNT11-2400	ZNG-2311 ZNG-2315 ZNG-2400	85.0 83.0 82.0	ZNT11	15,600	11	7	-12	36	38 ¹ / ₂	5 ¹ / ₁₆	5 ¹ / ₂	6 ³ / ₁₆	2 ¹ / ₄	2 ¹ / ₂	14 ¹ / ₂	12	12	2 ¹ / ₁₆	36 ⁵ / ₁₆	1 ¹ / ₄ 7 NC	5	4	3 ⁴ / ₈	209
								-18	42	44 ¹ / ₂							18			42 ⁵ / ₁₆					217
								-24	48	50 ¹ / ₂							24			48 ⁵ / ₁₆					249
								-30	54	56 ¹ / ₂							30			54 ⁵ / ₁₆					269
								-36	60	62 ¹ / ₂							36			60 ⁵ / ₁₆					279

Bore Size = Nominal Shaft Size +.001 -.000

Metric Bore Sizes Available - See Page D-44

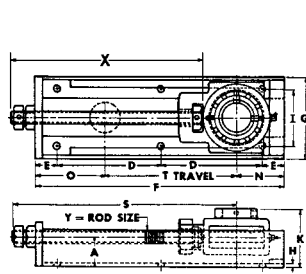
Seals - To specify K or M seal, replace "Z" in model number with "K" or "M" - See Pages D-58 and D-59.

*Allowable Working load is 2/3 yield strength

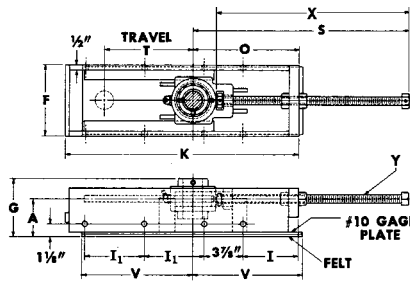
Note: Dimensions subject to change. Certified dimensions of ordered material furnished on request.

OTHER SHAFT MOUNTING STYLES AVAILABLE. REFER TO PAGE D-33.

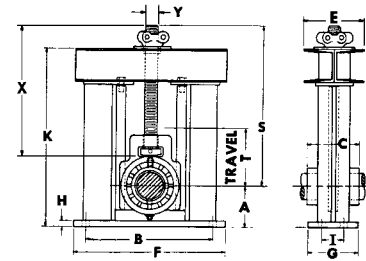
Rex' Roller Bearings ZAT, ZFT, ZGT TAKE-UP ASSEMBLIES



ZAT



Boot End — ZFT



Head End — ZGT

ZAT TAKE-UP ASSEMBLIES - NORMAL DUTY

2000 & 3000 Series — Single Set Collar Only

Shaft Size Inches	Complete Assembly No.	Take-Up Blocks Only *	Frame Assemblies Only	Size Code	Dimensions in Inches													Bolts Req'd. No.	Size	Complete Take-Up Wt. Lbs.	
					A	D	E	F	G	H	I	K	T Travel	N	O	S	X				Y Thread
17/16	ZAT4-2107-9 ZAT4-3107-9	ZT4-2107 ZT4-3107	ZAT4-9	4	1 7/8	6 7/16	1 1/2	15 7/8	5 3/16	3/16	3 3/16	3 3/8	9	3	3 3/8	15	13 1/2	3/4-10NC	6	1/2	18.4
1 11/16	ZAT5-2111-9 ZAT5-3111-9	ZT5-2111 ZT5-3111	ZAT6-9	...	2	7	1 1/2	17	5 13/16	1/4	4 1/16	3 3/8	9	3 3/4	4 3/4	16	13 1/2	7/8-9NC	6	1/2	26.8
1 15/16	ZAT6-2115-9 ZAT6-3115-9	ZT6-2115 ZT6-3115	ZAT6-9	...	2	7	1 1/2	17	5 13/16	1/4	4 1/16	3 3/8	9	3 3/4	4 3/4	16	13 1/2	7/8-9NC	6	1/2	27.1
2 3/16	ZAT7-2203-9 ZAT7-3203-9	ZT7-2203 ZT7-3203	ZAT7-9	7	2	7 1/2	1 1/2	18	6 9/16	1/4	4 13/16	4	9	3 3/16	5 7/16	16 15/16	14 3/16	1-8NC	6	1/2	33.7
2 7/16	ZAT8-2207-12 ZAT8-3207-12	ZT8-2207 ZT8-3207	ZAT8-12	8	2 1/4	6 1/16	1 3/4	21 11/16	7 7/16	5/16	5 1/16	4 7/16	12	3 13/16	5 7/8	20 3/4	18	1 1/8-7NC	8	1/2	51.0
2 15/16	ZAT9-2215-12 ZAT9-3215-12	ZT9-2215 ZT9-3215	ZAT9-12	9	2 7/16	6 1/2	1 3/4	23	8 1/8	5/16	5 31/32	4 7/8	12	4 1/4	6 3/4	21 1/4	18 1/2	1 1/4-7NC	8	1/2	75.0

Bore Size = Nominal Shaft Size +.001 -.000
Metric Bore Sizes Available - See page D-44

Seals - To specify K or M seal, replace "Z" in model number with "K" or "M" - See Pages D-58 and D-59. Auxiliary Caps - Available on outboard side only.

ZFT BOOT END — HEAVY DUTY

5000 Series — Double Set Collar Only

Shaft Size Inches	Complete Assembly No.	Take-Up Blocks Only *	Frame Assemblies Only	Size Code	Dimensions in Inches											Bolt Size	Complete Take-Up Wt. Lbs.	
					A	F	G	I	I ₁	K	T Travel	O	S	V	X			Y Thread
1 15/16	ZFT6-5115-9	ZT6-5115	ZFT6-9	6	3 11/16	7 3/16	5 5/8	5 1/2	6	23 1/2	9	10 5/8	21 3/4	11	19 1/2	7/8-9NC	1/2	63
2 7/16	ZFT8-5207-12	ZT8-5207	ZFT8-12	8	3 15/16	8 5/16	6 1/8	7 5/16	7 1/2	28 5/8	12	12 7/16	27	14	24 1/4	1 1/8-7NC	1/2	88
2 1/2	ZFT9-5208-12	ZT9-5208	ZFT9-12	9	4 3/8	8 5/8	6 13/16	8 3/4	7 1/2	30 3/8	12	13 7/8	28 5/8	14	25 3/8	1 1/4-7NC	1/2	117
2 11/16	ZFT9-5211-12	ZT9-5211																115
2 15/16	ZFT9-5215-12	ZT9-5215																114

Bore Size = Nominal Shaft Size +.001 -.000 Metric Bore Sizes Available - See page D-44

Seals - To specify K or M seal, replace "Z" in model number with "K" or "M" - See Pages D-58 and D-59.

ZGT HEAD END — HEAVY DUTY

5000 Series — Double Set Collar

Shaft Size Inches	Complete Assembly No.	Take-Up Blocks Only *	Frame Assemblies Only	Allowable Working Load Lbs. †	Size Code	Dimensions in Inches											Bolt Size	Complete Take-Up Wt. Lbs.		
						A	B	C	E	F	G	H	I	K	T Travel	S			X	Y Thread
1 15/16	ZGT6-5115-6	ZT6-5115	ZGT6-6	12,300	6	3 3/16	10	3 13/16	4 13/16	12	3 1/2	1 1/2	1 1/4	16 1/2	6	15 1/8	13 3/8	1-8NC	1/2	50
2 7/16	ZGT8-5207-7	ZT8-5207	ZGT8-7	20,900	8	4 1/8	11	4 3/8	4 13/16	13 1/2	4	3/4	2	19 7/16	7	18 3/4	13 3/8	1 1/4-7NC	5/8	74
2 1/2	ZGT9-5208-7	ZT9-5208	ZGT9-7	26,800	9	4 5/8	12	4 7/8	5 1/4	14 1/2	5	3/4	2 1/2	20 7/8	7	17 7/8	15 1/2	1 1/2-6NC	5/8	103
2 11/16	ZGT9-5211-7	ZT9-5211																		101
2 15/16	ZGT9-5215-7	ZT9-5215																		100
3 3/16	ZGT10-5303-10	ZT10-5303	ZGT10-10	27,300	10	5 1/8	13	5 5/16	6	16	5	3/4	3	25 1/16	10	23 3/16	19 1/2	1 3/4-5NC	3/4	140
3 7/16	ZGT10-5307-10	ZT10-5307																		138
3 11/16	ZGT11-5311-10	ZT11-5311	ZGT11-10	45,400	11	5 13/16	14	6 1/4	8 3/4	17	5	3/4	3	27 3/4	10	26 7/16	22	2-4 1/2NC	3/4	214
3 13/16	ZGT11-5315-10	ZT11-5315																		211
4	ZGT11-5400-10	ZT11-5400																		210
4 7/16	ZGT12-5407Y-10	ZT12-5407Y	ZGT12-10	53,700	12	6 13/16	17	6 1/4	9 3/4	20	6	3/4	3 1/2	32 1/4	10 1/2	29 1/2	24 1/2	2-4 1/2NC	7/8	260
4 15/16	ZGT13-5415-10	ZT13-5415	ZGT13-10	68,000	13	7 3/16	18	7 7/8	9 7/16	21	6	3/4	3 1/2	34 5/8	10 1/2	31 3/4	26 5/16	2 1/4-4 1/2NC	7/8	329
5	ZGT13-5500-10	ZT13-5500																		326
5 7/16	ZGT14-5507-10	ZT14-5507	ZGT16-10	125,000	...	9 11/16	23	8 3/4	10 1/2	31	10	1	7	44 7/8	10 1/2	42 1/4	35	3-4NC	1 1/8	1200
5 15/16	ZGT15-5515-10	ZT15-5515																		
6	ZGT15-5600-10	ZT15-5600																		
6 1/16	ZGT16-5607-10	ZT16-5607																		
6 15/16	ZGT16-5615-10	ZT16-5615																		
7	ZGT16-5700-10	ZT16-5700																		

Bore Size = Nominal Shaft Size +.001 -.000 Metric Bore Sizes Available - See page D-44

Seals - To specify K or M seal, replace "Z" in model number with "K" or "M" - See Pages D-58 and D-59.

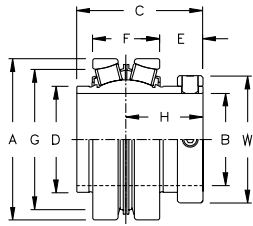
† Allowable Working load is 2/3 yield strength

* See page D-34 for take-up block dimensions

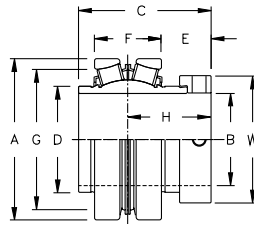
Note: Dimensions subject to change. Certified dimensions of ordered material furnished on request. OTHER SHAFT MOUNTING STYLES AVAILABLE. REFER TO PAGE D-33.

BEARING ONLY DIMENSIONS

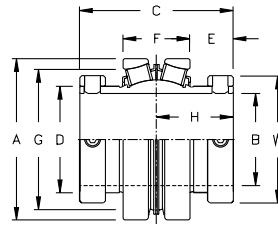
Rex[®] Roller Bearings



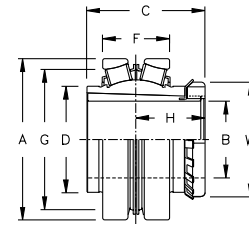
Normal Duty — 2000 Series



Medium Duty — 3000 Series



Heavy Duty — 5000 Series



Adapter — 9000 Series

Dimensions — Inches

Size Code	Bearing Number				A*	B		C				E			D	F	G	H			W							
	2000	3000	5000	9000		2000† 3000 5000	9000	2000	3000	5000	9000	2000 5000	3000	9000				2000 5000	3000	9000	2000 3000 5000	9000						
2	2012	2.3780	.7500	...	2.57	1.31	1.12	1.93	1.57	1.74	...							
	2015937598				
	2100		1.0000			
3	2102	2.6280	1.1250	...	2.69	1.53	1.31	2.18	1.62	1.96	...							
	2103		1.187597				
	2104		1.2500			
4	2107	3107	5107	...	2.8375	1.4375	...	2.92	3.56	1.75	1.31	2.38	1.78	1.83	...	2.30	...							
	2108		1.5000	...	2.88	1.12	1.17				
5	5108	...	3.3495	1.5000	3.81	2.02	1.58	2.78	1.91	1.95	...	2.58	...							
	2111	3111	5111	...		1.6875	...	3.13	3.18	3.81	...	1.12	1.17							
	2112		1.7500	...	3.13			
6	2115	3115	5115	...	3.5465	1.9375	...	3.13	3.28	3.81	2.31	1.53	3.04	1.91	2.06	...	2.89	...							
	2200		2.0000	1.14	1.29				
7	9115	3.9400	...	1.94	3.14	2.62	1.66	3.38	1.89	...	2.97							
	2203	3203	5203	9200		2.0000	2.00	4.13	3.14	1.24	1.42				1.06	2.62	1.66	3.38	2.06	...	1.89	3.25	2.97			
	2204		2.1875	...	3.32	3.50	4.13	2.06	2.24	3.25			
		2.2500	...	3.32	2.06	3.25			
8	2206	9203	4.3337	2.3750	2.19	3.34	1.31	1.45	1.15	2.90	2.19	...	2.03	...	3.38						
	2207	3207	5207	...		2.4375	...	3.51	3.65	4.37	...	1.45	1.45					1.15	2.90	1.75	3.76	2.19	2.33	...	3.56			
	2208	3208		2.5000	...	3.51	3.65	1.01	2.19	3.56		
	2.19	3.56		
9	9207	5.1202	...	2.44	3.74	1.37	1.57	1.11	3.37	2.18	...	3.63						
	2211	3211	5208	9208		2.5000	2.50	4.87	3.74	2.44	...	2.18	...	4.05		
	2212	...	5211	...		2.6875	...	4.00	4.20	4.87	2.44	2.63	4.05		
	2215	3215	5215	...		2.7500	...	4.00	1.37	1.57					1.11	3.37	2.13	4.45	2.44	4.05		
	2300		2.9375	...	4.00	4.20	4.87	2.44	2.63	4.05		
10	9211	5.9075	...	2.69	4.25	1.50	1.68	1.37	3.97	2.53	...	4.41						
	2303	9215		3.1875	...	4.39	...	5.32	...	4.25	2.66	...	2.53	...	4.41		
	2307	3307	5307	9300		3.4375	...	4.39	4.57	5.32	2.66	2.84	4.91		
	2308	3308		3.5000	...	4.39	4.57	2.66	2.84	4.91		
11	9303	7.0890	...	3.19	5.07	1.75	1.75	1.63	4.56	3.01	...	5.19						
	2311	9307		3.6875	3.44	5.07	3.01	...	5.19		
	2315	3315	5315	...		3.9375	...	5.20	5.19	6.25	3.13	3.13	5.63		
	2400	...	5400	...		4.0000	...	5.20	...	6.25	3.13	5.63		
12	9311Y	7.6820	...	3.69	5.41	1.78	1.82	5.03	2.68	6.80	3.16	...	5.72					
	9315Y		...	3.94	5.41	3.16	...	5.72
	9400Y		...	4.00	5.41	3.16	...	5.72
	5403Y	...		4.1875	6.25	3.12	6.19
	5407Y	...		4.4375	6.25	3.12	6.19
13	9403	9.0579	...	4.19	6.76	2.10	2.07	5.75	3.56	7.87	3.85	...	6.13					
	9407		...	4.44	6.76	3.85	...	6.13	
	5415	...		4.9375	7.88	3.94	7.05	
	5500	...		5.0000	7.88	3.94	7.05	
14	9415	10.6329	...	4.94	7.19	2.00	2.13	6.50	4.00	9.18	4.13	...	7.09					
	9500		...	5.00	7.19	4.13	...	7.09
	5507	...		5.4375	8.00	4.00	8.18	...
15	9503	11.4203	...	5.19	7.57	2.06	2.38	7.20	4.00	9.86	4.38	...	8.06					
	9507		...	5.44	7.57	4.38	...	8.06
	5515	...		5.9375	8.13	4.07	8.64	
16	9515	12.6014	...	5.94	7.75	2.25	2.37	8.05	4.25	10.88	4.50	...	9.06					
	9600		...	6.00	7.75	4.50	...	9.06
	5607	9607		6.4375	...	6.44	8.75	7.75	2.25						2.37	8.05	4.25	10.88	4.38	4.50	9.72	9.06
	5615	...		6.9375	8.75	4.38	9.72	9.06
...	...	5700	...	7.0000	8.75	4.38	9.72	9.06							

*Outside Diameter Tolerance: Series Size Code 2-13 = +.0000/-.0010 And Size Code 14-16 = +.0000/-.0015

†Bore Tolerance: +.0010/-.0000

Note: Dimensions subject to change. Certified dimensions of ordered material furnished on request.

REX BEARING LINE INTERCHANGEABILITY

The standard units listed in this catalog will normally be the most readily available and the most balanced design. However, alternate shaft mounting designs can be supplied with any housing style to suit application needs.

The following mounting designs are available in sizes indicated in the interchange table:

- ... 2000 Series - normal duty - single set collar provides most economical design.
- ... 3000 Series - medium duty - additional shaft holding capacity.
- ... 5000 Series - heavy duty - double set collar provides greater stability and shaft contact area.
- ... 9000 Series - tapered adapter sleeve provides greatest capacity, stability and concentricity

The interchange table at the right lists all standard bearing inserts. (See Page 40) Those bearings with the same size code have identical housing fitup dimensions and can be substituted interchangeably.

ZA2203 pillow block contains 2203 bearing insert (single set collar, 2³/₁₆" shaft). The interchange table shows the 2203 bearing in size code 7.

2204, 5200, 5203, 9115 and 9200 bearings also are size code 7 units and can be substituted in the same housing.

Example 1 - Can ZA2203 pillow block be supplied with two set collars?

Yes - 5203 bearing insert (double set collar, 2³/₁₆" shaft size) is the same size code (7) as the 2203 bearing. Model number becomes ZA5203.

Example 2 - Can ZA2203 pillow block be supplied with tapered adapter sleeve mounting?

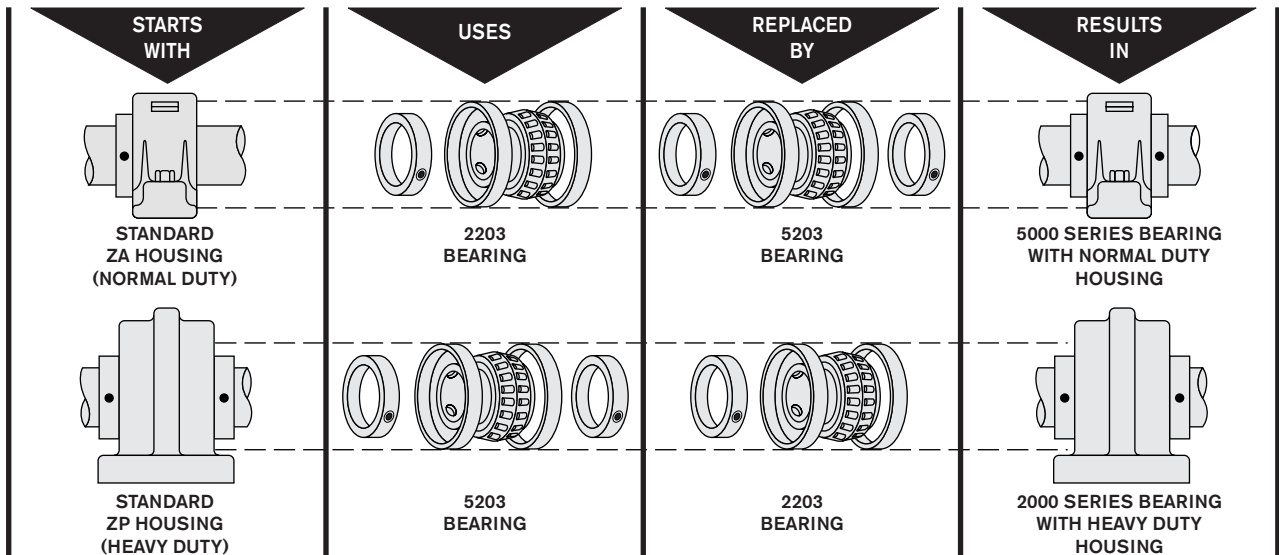
Only the 9115 (1¹/₁₆" shaft size) and 9200 (2" shaft size) tapered adapter sleeve bearings use the size code 7 housing. Either could be substituted resulting in model number ZA9115 or ZA9200. (Note that the shaft size becomes smaller than the original 2³/₁₆" in this example.)

The 9203 insert (2³/₁₆" shaft size) is a size code 8 unit and would interchange with similar size code inserts (2206, 2207, 2208). Model number ZA9203 would use the size code 8 housing shown on Page D-12 (ZA-2207 housing dimensions).

Rex Bearing Assembly Interchange

2000 Series Normal Duty Single Set Collar		3000 Series Medium Duty Increased Shaft Holding Capacity		5000 Series Heavy Duty Double Set Collar		9000 Series Adapter Sleeve		Size Code	Approx. Outer Race Dia.
Shaft Size Inches	Bearing Number	Shaft Size Inches	Bearing Number	Shaft Size Inches	Bearing Number	Shaft Size Inches	Bearing Number		
3/4 15/16 1	2012 2015 2100			2	2.37
1/8 1/16 1/4	2102 2103 2104			3	2.63
1/16 1/2	2107 2108	1/16 ...	3107 ...	1/16 ...	5107	4	2.83
1 ¹ / ₁₆ 1/4	2111 2112	1 ¹ / ₁₆ ...	3111 ...	1/2 1 ¹ / ₁₆	5108 5111	5	3.34
1 ¹ / ₁₆ 2	2115 2200	1 ¹ / ₁₆ ...	3115 ...	1 ¹ / ₁₆ ...	5115	6	3.54
2 ³ / ₁₆ 2/4	2203 2204	2 2 ³ / ₁₆	5200 5203	1 ¹ / ₁₆ 2	9115 9200	7	3.94
2 ³ / ₁₆ 2/16 2/2	2206 2207 2208	2 ³ / ₁₆ ...	9203 ...	8	4.32
2 ¹ / ₁₆ 2 ³ / ₄ 2 ¹⁵ / ₁₆ 3	2211 2212 2215 2300	2 ¹ / ₁₆ 2 ¹ / ₁₆ 2 ¹⁵ / ₁₆ ...	5208 5211 5215 ...	2 ⁷ / ₁₆ 2 ¹ / ₂ ...	9207 9208 ...	9	5.12
3 ³ / ₁₆ 3/16 3/2	2303 2307 2308	3 ³ / ₁₆ 3 ³ / ₁₆ 3 ¹ / ₂	5303 5307 ...	2 ¹ / ₁₆ 2 ¹⁵ / ₁₆ 3	9211 9215 9300	10	5.90
3 ¹ / ₁₆ 3 ¹⁵ / ₁₆ 4	2311 2315 2400	3 ¹ / ₁₆ 3 ¹⁵ / ₁₆ ...	5311 5315 5400	3 ³ / ₁₆ 3 ⁷ / ₁₆ ...	9303 9307 ...	11	7.09
...	4 ³ / ₁₆ 4 ⁷ / ₁₆ 4 ¹ / ₂	5403Y 5407Y 5408Y	3 ¹ / ₁₆ 3 ¹⁵ / ₁₆ 4	9311Y 9315Y 9400Y	12	7.68
...	4 ¹⁵ / ₁₆ 5	5415 5500	4 ³ / ₁₆ 4 ⁷ / ₁₆	9403 9407	13	9.05
...	5 ⁷ / ₁₆ ...	5507 ...	4 ¹⁵ / ₁₆ 5	9415 9500	14	10.63
...	5 ¹⁵ / ₁₆ 6	5515 5600	5 ³ / ₁₆ 5 ⁷ / ₁₆	9503 9507	15	11.42
...	6 ⁷ / ₁₆ 6 ¹⁵ / ₁₆ 7	5607 5615 5700	5 ¹⁵ / ₁₆ 6 6 ⁷ / ₁₆	9515 9600 9607	16	12.60

REX BEARING LINE INTERCHANGEABILITY



BEARING REPLACEMENT KITS

Rex' Roller Bearings

2000 Series



Kit contains: One inner race and roller assembly, two outer races, one set collar.

3000 Series



Kit contains: One inner race and roller assembly, two outer races, one set collar.

5000 Series



Kit contains: One inner race and roller assembly, two outer races, two set collars.

9000 Series



Kit contains: One inner race and roller assembly, two outer races, one adapter sleeve, one nut, one lock washer.

Size Code	Shaft Size, Inches	Bearing Replacement Kit		Bearing Replacement Kit		Shaft Size, Inches	Bearing Replacement Kit		Shaft Size, Inches	Bearing Replacement Kit	
		No.	Wt., Lbs.	No.	Wt., Lbs.		No.	Wt., Lbs.		No.	Wt., Lbs.
2	3/4	2012U	1.3
	15/16	2015U	1.2
	1	2100U	1.2
3	1 1/8	2102U	1.6
	1 9/16	2103U	1.6
	1 1/4	2104U	1.5
4	1 7/16	2107U	1.7	3107U	1.9	1 7/16	5107U	2.2
	1 1/2	2108U	1.6
5	1 11/16	2111U	2.7	3111U	2.9	1 1/2	5108U	3.7
	1 3/4	2112U	2.6	1 11/16	5111U	3.3
6	1 15/16	2115U	3.1	3115U	3.3	1 15/16	5115U	3.7
	2	2200U	2.9
7	2 3/16	2203U	4.0	3203U	4.3	2	5200U	5.7	1 15/16	9115U	4.2
	2 1/4	2204U	3.9	2 3/16	5203U	5.1	2	9200U	4.1
8	2 3/8	2206U	5.0	2 3/16	9203U	5.3
	2 7/16	2207U	5.0	3207U	5.2	2 7/16	5207U	6.0
	2 1/2	2208U	4.9	3208U	5.1
9	2 11/16	2211U	8.7	3211U	8.9	2 1/2	5208U	11.4	2 7/16	9207U	8.0
	2 3/4	2212U	8.5	2 11/16	5211U	10.4	2 1/2	9208U	7.6
	2 5/8	2215U	7.5	3215U	7.9	2 15/16	5215U	9.9
	3	2300U	7.2
10	3 3/16	2303U	12.9	3 3/16	5303U	15.5	2 11/16	9211U	14.1
	3 7/16	2307U	11.4	3307U	12	3 7/16	5307U	13.6	2 15/16	9215U	12.9
	3 1/2	2308U	10.9	3308U	11.1	3	9300U	12.2
11	3 11/16	2311U	23.0	3 11/16	5311U	25.5	3 3/16	9303U	26.0
	3 5/8	2315U	20.7	3315U	20.7	3 15/16	5315U	24.5	3 7/16	9307U	24.0
	4	2400U	20.0	4	5400U	23.5
12	4 3/16	5403YU	29.6	3 11/16	9311YU	26.8
	4 7/16	5407YU	26.6	3 15/16	9315YU	24.5
	4 1/2	5408YU	25.8	4	9400YU	24.0
13	4 15/16	5415U	58.0	4 3/16	9403U	58.0
	5	5500U	57.0	4 7/16	9407U	56.0
14	5 7/16	5507U	75.0	4 15/16	9415U	69.0
	5	9500U	68.0
15	5 15/16	5515U	88.0	5 3/16	9503U	87.0
	6	5600U	86.0	5 7/16	9507U	83.0
16	6 7/16	5607U	111	5 15/16	9515U	106
	6 15/16	5615U	106	6	9600U	105
	7	5700U	104	6 7/16	9607U	98.0

Adapter sleeve is not A.F.B.M.A. standard and must be purchased as a kit.

Seal Kits (2 Seals per kit)



(K) Seal Kit
Contains 2
Seal Assemblies



(M) Seal Kit
Contains 2
Seal Assemblies

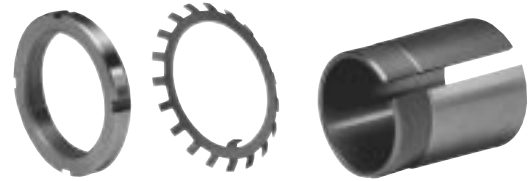
Threaded Cover Kit



Threaded Cover Kit



Set Collar Kit



Adapter Sleeve Kit

Seal Kits (2 Seals Per Kit)			Threaded Cover Kit (Threaded Cover and Microlock)	Set Collar Kit	Microlock Assembly Kit	Adapter Sleeve Kit
Z	K	M				
ZS-2	KS-2	MS-2	TC-2	SC-2	ML-2	...
ZS-3	KS-3	MS-3	TC-3	SC-3	ML-2	...
ZS-4	KS-4	MS-4	TC-4	SC-4◆	ML-2	...
ZS-5	KS-5	MS-5	TC-5	SC-5◆	ML-2	...
ZS-6	KS-6	MS-6	TC-6	SC-6◆	ML-2	...
ZS-7	KS-7	MS-7	TC-7	SC-7◆	ML-2	AK7-115 AK7-200
ZS-8	KS-8	MS-8	TC-8	SC-8◆	ML-3	AK8-203
ZS-9	KS-9	MS-9	TC-9	SC-9◆	ML-3	AK9-207 AK9-208
ZS-10	KS-10	MS-10	TC-10*	SC-10◆	ML-4*	AK10-211 AK10-215 AK10-300
ZS-11	KS-11	MS-11	TC-11	SC-11◆	ML-4	AK11-303 AK11-307
ZS-12Y	...	MS-12Y	TC-12Y	SC-12Y	ML-4	AK12-311Y AK12-315Y AK12-400Y
ZS-13	...	MS-13	TC-13	SC-13	ML-4	AK13-403 AK13-407
ZS-14	...	MS-14	TC-14	SC-14	ML-4	AK14-415 AK14-500
ZS-15	...	MS-15	TC-15	SC-15	ML-4	AK15-503 AK15-507
ZS-16	...	MS-16	TC-16	SC-16	ML-4	AK16-515 AK16-600 AK16-607

* Floating units require ML-3

◆ NOTE: Twist Lock 3000 series set collar kits can be ordered by using SC and the series and shaft size designation, i.e. SC3207.

METRIC SIZES

The first digit of the metric bearing number indicates mounting type (2000 Series Normal duty single set collar, or 5000 Series heavy duty double set collar - the last 3 digits indicate shaft size in millimeters).

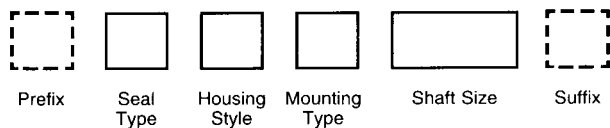
Standard metric bearings are single set collar 2000 series.

Any unit with the same size code can be supplied with a metric bore. Substitute metric bearing number for standard 4 digit bearing number.

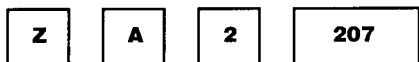
.... ZA2107 with 35 millimeter bore becomes ZA2035MM

.... ZP5307F with 90 millimeter bore becomes ZP5090MMF

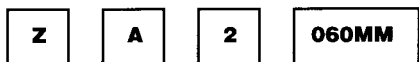
Basic Nomenclature Format



Inch Example



Metric Example



Metric Example with Prefix & Suffix



Example 1 - Flange cartridge bearing with Z seals and 60 millimeter shaft size - Model Number ZBR2060MM.

From interchange table above, 60MM shaft size is a size code 8 unit and will fit in any size code 8 housing. Dimensions for flange cartridges are found on Page D-24. The 2060MM bearing will fit in the size code 8 housing and the dimensions for the ZBR2206, ZBR2207 and ZBR2208 can be used.

Example 2 - ZA pillow block with 80 millimeter shaft size - Model Number ZA2080MM.

From interchange table above 80MM shaft size is size code 10. ZA dimensions are found on Page D-12. Use size code 10 dimensions (ZA2303 etc.)

Example 3 - What metric bore sizes can be supplied with ZEP2215F pillow block?

From Page D-10 the ZEP 2215F unit has a 9 size code. In the table above it is seen that a 70 or 75 millimeter size bearing could be used in this pillow block. The model number would become ZEP2070MMF or ZEP2075MMF.

Rex Bearing Assembly Interchange

2000 Series Normal Duty Single Set Collar		5000 Series Heavy Duty Double Set Collar		9000 Series Adapter Sleeve		Size Code
Shaft Size mm	Bearing Number	Shaft Size mm	Bearing Number	Shaft Size mm	Bearing Number	
25	2025MM*	2
30	2030MM*	3
35	2035MM	35	5035MM	4
40	2040MM	40	5040MM*	5
45	2045MM*	
50	2050MM*	45	5045MM	6
55	2055MM	50	5050MM*	
60	2060MM	55	5055MM*	50	9050MM	7
65	2065MM*	60	5060MM	55	9055MM	
70	2070MM*	65	5065MM*	8
75	2075MM*	70	5070MM*	60	9060MM	
80	2080MM	75	5075MM*	65	9065MM	9
85	2085MM*	80	5080MM	70	9070MM	
90	2090MM*	85	5085MM*	75	9075MM	10
...	...	90	5090MM*	
100	2100MM*	100	5100MM*	80	9080MM	11
...	85	9085MM	
...	90	9090MM	12
...	...	110	5110MM*	
...	...	115	5115MM*	100	9100MM	13
...	...	125	5125MM	
...	...	130	5130MM*	110	9110MM	14
...	...	135	5135MM	
...	...	140	5140MM*	125	9125MM	15
...	...	150	5150MM	130	9130MM	
...	...	160	5160MM*	135	9135MM	16
...	...	170	5170MM	140	9140MM	
...	...	180	5180MM*	150	9150MM	16
...	160	9160MM	

*Most Readily Available Sizes